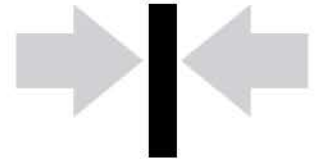




## Hanging Posters with pole pockets 48" inches x 36" inches



**Double Sided**

1. You setup your UPLOAD SIZE dimensions as below.
2. Keep all important elements inside the Graphic Area.  
Print to edge graphics is acceptable, BUT DO NOT change your artboard size. DO NOT put grommet, trim marks, color bars or OR registration marks on your upload file anywhere.

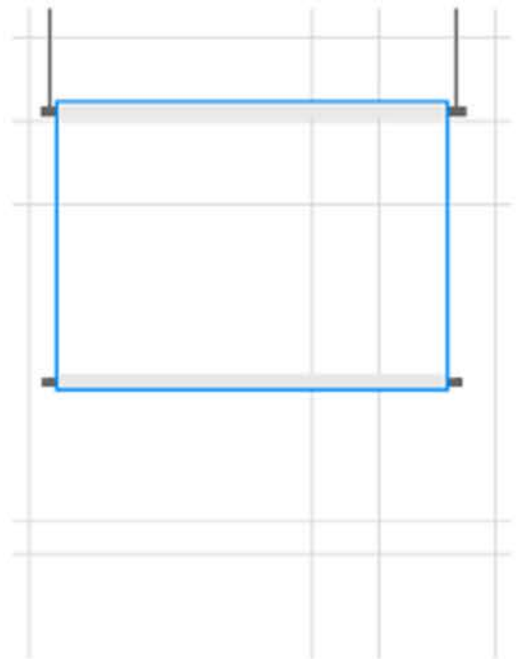
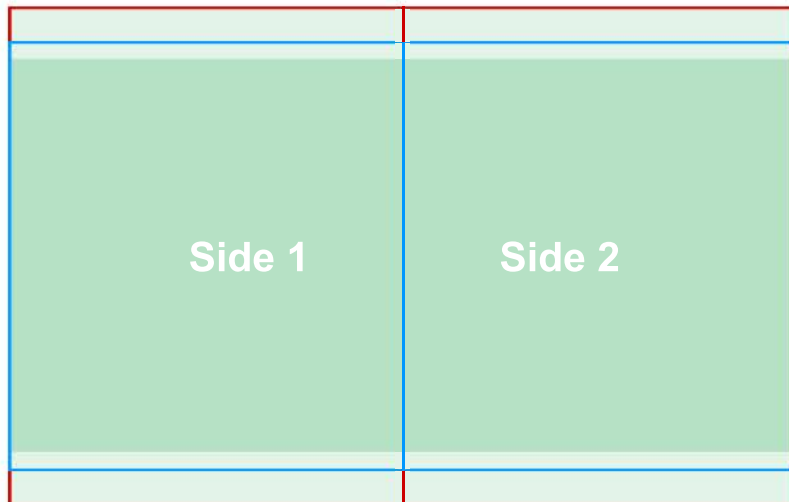
3. Rasterize all elements > Flatten Image > File Save As > CMYK high quality PDF

Item Description: double sided graphics

Edge cut hanging poster with top & bottom pole pocket sleeves to suit 1" diameter pole

**SETUP SPECIFICATIONS Create Artwork at:** UPLOAD SIZE: 96" inches x 42" inches

- Upload Size: 96" inches wide x 42" inches high
- Finished Poster Size: 48" inches wide x 36" inches high
- Graphics Area
- Graphics Safety Area 48" inches x 31" inches



**You upload ARTBOARD Size 96" inches x 42" inches. We slice the print for Double Sided output**

How it's made: This product needs setup top and bottom material that we fold over and sew to form the pole pocket sleeve. Verticals are not hemmed.



Pole Pocket Sleeve - Back View

[www.signsbannersonline.com/templates](http://www.signsbannersonline.com/templates)